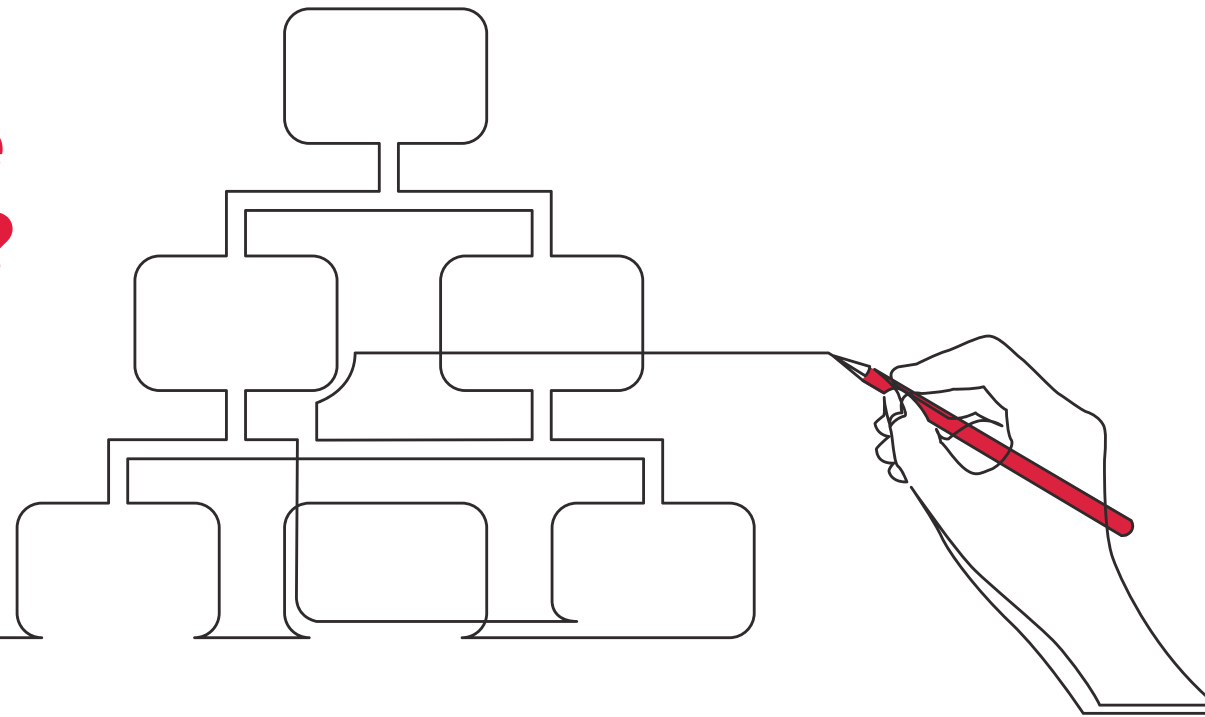
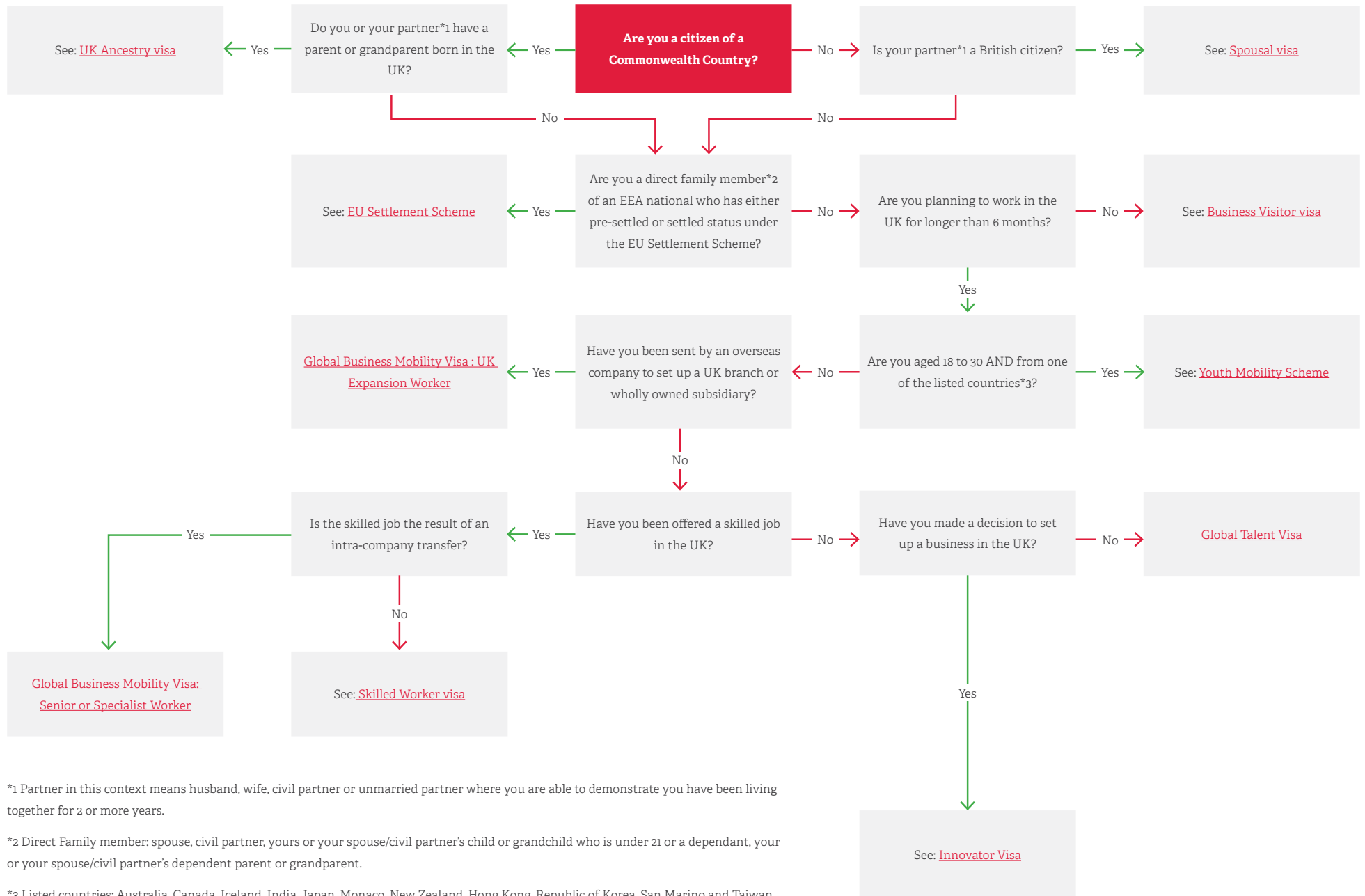


# Which Visa Do You Need to Legally Live and Work in the UK?





\*1 Partner in this context means husband, wife, civil partner or unmarried partner where you are able to demonstrate you have been living together for 2 or more years.

\*2 Direct Family member: spouse, civil partner, yours or your spouse/civil partner's child or grandchild who is under 21 or a dependant, your or your spouse/civil partner's dependent parent or grandparent.

\*3 Listed countries: Australia, Canada, Iceland, India, Japan, Monaco, New Zealand, Hong Kong, Republic of Korea, San Marino and Taiwan.

---

**For More  
Information  
Contact One  
of Our Partners  
Today →**

**Email: [contact@ouryclark.com](mailto:contact@ouryclark.com)**

**Oury Clark London:**

10 John Street, London WC1N 2EB

**Tel: +44 (0) 20 7067 4300**

**Oury Clark Slough:**

Herschel House, 58 Herschel Street  
Slough SL1 1PG

**Tel: +44 (0) 1753 551111**



---

**Disclaimer:** This note does not contain a full statement of the law and it does not constitute legal advice. Please contact us if you have any questions about the information set out above.

IMM3 © Oury Clark